

# Butterflies



**Brimstone (m)**



**Brimstone (f)**



**Speckled Wood**



**Ringlet**



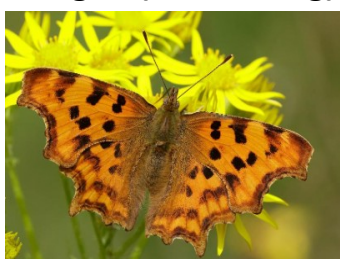
**Ringlet (under wing)**



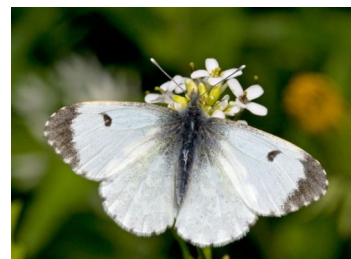
**Orange Tip (m)**



**Meadow Brown (f)**



**Comma**



**Orange Tip (f)**



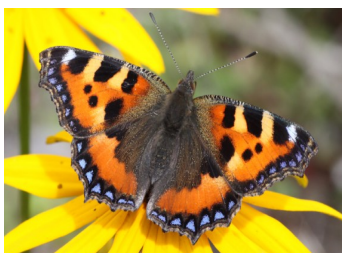
**Common Blue (m)**



**Common Blue (f)**



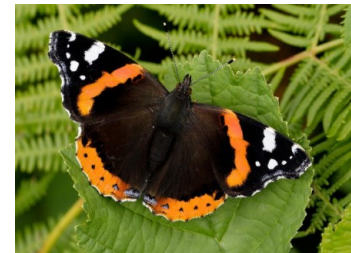
**Peacock**



**Small Tortoiseshell**



**Painted Lady**



**Red Admiral**

**White-Letter Hairstreak.** If you are very lucky you may see this special butterfly on the reserve in mid July. They are a small butterfly which lives in the tops of elm trees so are very difficult to see. However they come down to ground level to feed on the nectar from flowers such as bramble and creeping thistle. Sadly many of the Wych elm trees on the reserve are infected by Dutch elm disease and will die. We planted more elms but they will take many years to mature so we may lose this enigmatic butterfly.

